

UPCOMING EVENTS

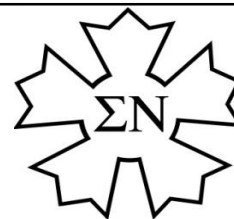
Candidate Initiation

Approximately April 16

Spring Alumni Weekend

April, more information to come out in the coming months

The Epsilon Sigma News



Sigma Nu Fraternity • Rhodes College • Fall 2013

Important Note: If you have not already done so, please use the Alumni Update form on our website to [update your information](#) so you can continue to receive messages and updates from the Chapter.

Greetings from the Active Chapter

Hello Brothers,

It is my pleasure to forward the Epsilon Sigma Chapter of Sigma Nu's latest Newsletter for the Fall 2013 Semester. This semester has been a great one for the chapter as I hope you will see in the following pages. Our homecoming celebration in October was well-attended and offered a nice time of fellowship and reminiscing for our alumni and for the active brothers. I encourage you to stay up to date with us and with the college via the links above. Additionally, we also continue to advertise our events through the summer, especially through the [Facebook](#) page. Please do not hesitate to reach out to me with any announcements for the chapter or to share some of your story with the brothers. My contact email is taiad-15@rhodes.edu. We hope you enjoy the contents of this Newsletter and we look forward to hearing back from you soon!

Sincerely,
Andrew Tait, EΣ 1150
Alumni Relations Chairman

Recruitment

The Active Chapter is now strongly over 50 members in size. Please welcome our new pledges!



Fall 2013 Pledges Class

EΣ 1176	Jim Bugg	San Antonio, TX
EΣ 1177	Tyler Harvey	Greer, SC
EΣ 1178	Sam Jordan	Evansville, IN
EΣ 1179	Josh Ladd	Nashville, TN
EΣ 1180	Ted Ling Hu	Taiwan
EΣ 1181	Nick Lowrimore	Southlake, TX
EΣ 1182	David Marsicano	Charlotte, NC
EΣ 1183	Michael McCanless	Calhoun, GA
EΣ 1184	Joseph Ozment	Franklin, TN
EΣ 1185	Cullen Williams	Franklin, TN

THE BROTHERS



Winter Formal



Homecoming Celebration



KΔ All-Sing Runner Up

Brotherhood

In the recent semesters, we have returned to brotherhood as the cornerstone to a successful fraternity. Several measures include monthly outings, a semester camping retreat, and improvements to the house. At least once a month we set aside time to bowl, watch a movie, catch a Grizzlies game, or play laser tag together. These events provide two great functions: gets us away from the daily academic stresses of campus and gives a platform for memories and fellowship as a united brotherhood. Additionally, nearly every active was able set aside an entire weekend of brotherhood. The pledges also joined us for a jovial weekend at brother Drew Kerby's farm in on the Mississippi-Tennessee border. It was a thrilling weekend of touch football, team building activities, storytelling and growth as a chapter. We take our academics seriously and cooperative learning amongst brothers of all grade levels drives our accolades in highest GPA. The recent improvements to the house have also allowed for better tailgates on Saturdays and all the brothers expect to be welcomed at the house we cherish as ours every day of every week. Surely, as you will see in the "Sound Off" section on pg. 4, brotherhood has been and will continue to be a unifying force in our chapter.

Andrew Tait, EΣ 1150
on behalf of Jonathan Cavell, Chaplain



Sigma Nu Sweethearts

*Sigma Nu girl, you'll always be
Sigma Nu girl, dearest to me.
All of my worries and cares depart
When you wear the White Star on your heart.
Sigma Nu girl, someday you'll know
Dreams will come true; I love you so.
Our star will shine pledge of the time
When you are mine in Sigma Nu.*

A number of sweethearts accompanied brothers to the 75th Anniversary Celebration. The Chapter will recognize all our sweethearts in the Sigma Nu Revisited video.

If you have information on any of our Sweethearts or are still in touch with them, please email epsilonsigma.alumni@gmail.com or [Contact Us!](#)

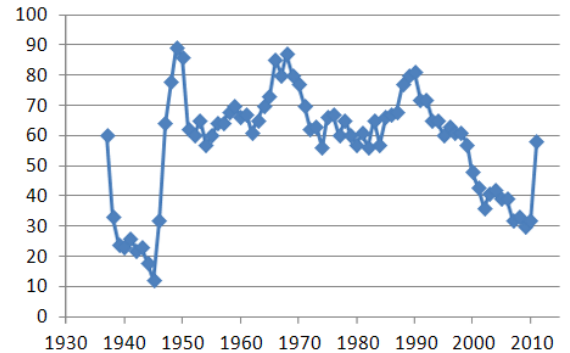


Networking Opportunities

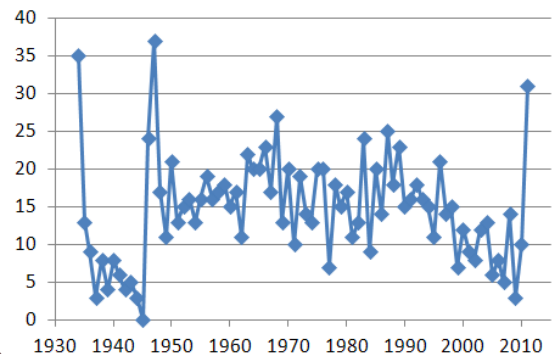
The Alumni Chapter is gathering information about networking opportunities, internships, and job offerings. If you would like to network with fellow alumni and/or know about internships or job offerings for recent grads and young alumni, please email epsilonsigma.alumni@gmail.com or [Contact Us!](#)

You can also connect with the Chapter on [LinkedIn](#), [Facebook](#), [Twitter](#), and [YouTube!](#)

Epsilon Sigma Chapter Size



Recruitment



Philanthropy

This semester, the Epsilon Sigma chapter hosted a philanthropy tailgate for the Memphis Ronald McDonald House. The Ronald McDonald House provides housing for families of long-term patients at the St. Jude children's hospital. They pay for vast majority of their expenses by getting money for donated can tabs, and the support is entirely volunteer based. We set up collection bins around campus and hosted a tailgate to raise can tabs for this wonderful organization. The event was well received and we have collected over 1,000 tabs for the kids.

-Mason Levy, EΣ 1145

The Joys of Travel

Over the summer I participated in two study abroad sessions: Rhodes College's own British Studies at Oxford, and a Greek study abroad program with Arcadia University. In Greece, I was given lectures on-site by a Greek archeologist at ancient locations such as Athens, Sparta, Olympia, Delphi, Corinth, and numerous others. While in Sparta, my class even witnessed the discovery of the bones of an ancient Spartan after our bus driver noticed a bone protruding from the recently eroded soil! In Britain, I studied the History of Science in the 19th and early 20th centuries, as well as Scottish literature. I lived and studied at St. John's College, part of the centuries-old Oxford University with fellow brothers Bailey Kimmitt and Brendan Tyler. In addition to my studies in Oxford, we made trips to Dublin, Ireland and Edinburgh, Scotland, and toured the WWI battle sites in France and Belgium. It was quite the summer. I learned a tremendous amount about the world and about myself from my travels, and the impact from my adventure will stay with me the rest of my life.

-Drew Kerby, EΣ 1155





Sound Off

“What’s the greatest thing you value in Sigma Nu and why?”

“I value the strong sense of brotherhood shared by all of its members and how far everyone is willing to go to help each other.”

-Harrison Adams, ΕΣ 1153

“I most value the brotherhood. I consider my brothers my lifelong best friends and support system, really like a second family. I am making my best memories with them and I know they will always have my back.”

-Colin Rye, ΕΣ 1169

“The greatest thing I value in Sigma Nu is brotherhood. We all live different lives but will stop at nothing to help a fellow brother out whenever he needs it. Without brotherhood we would never achieve anything.”

-Chris Giles, ΕΣ 1163

“Camaraderie. The relationships that I have built and continue to build grounds me. I know that am I am not the center of the universe and in the bonds of brotherhood, I know that I have someone to lean on for support and to be leaned on for support. I think that one of the goals in life is to impact the world and you cannot do it alone.”

-Phong Lam, ΕΣ 1122

“I value it for the trust it has engendered and the bonds that it has helped me form. I’ve met all the people I trust completely and formed almost every single important relationships I’ve had in college through our fraternity.”

-David Klemperer, ΕΣ 1143

“The sense of brotherhood that is present not out of similar backgrounds or personalities but because of common ideals. I value this brotherhood because at Rhodes especially there are so many diverse groups and they are sometimes predicated on common traits rather than similar beliefs and ideals.”

-Drew Link, ΕΣ 1134



Check out our all *NEW* website!

<http://www.epsilonstgmasigmanu.com>

A Closing Message from the Eminent Commander

As the new year approaches it is my pleasure to report the activities and accolades of the chapter this past fall semester. This semester the Epsilon Sigma chapter has had a lot to proud of that I am very excited to share with you. Our chapter has continued to maintain a very healthy size and we are fortunate enough to be able to increase our selectivity in terms of membership. This fall semester we initiated 10 individuals who all embody the tenets of our chapter and currently have 59 active chapter members.

We continue to maintain a great relationship with the administration and other campus officials. We have strong personal relationships with several deans and the heads of campus safety. Sigma Nu is one of the leaders in Greek life reform, and this past semester we worked with the administration and IFC to improve the recruitment process. Excellence in course work has been a point of pride in our chapter and continued excellence has been a major focal point for the chapter this semester.

This semester the active chapter focused on encouraging a higher level of involvement from chapter members and increasing our philanthropic effort. We partnered with the Ronald McDonald House of Memphis and began a semester long effort to collect recyclables to donate. Additionally, the chapter partnered with the college and hosted a campus wide anti-hazing information and panel session.

In terms of chapter operations, I am incredibly proud of the officers' efforts this past semester. They are the direct cause for the success we had this semester. We had socials with all four sororities on campus and continue to have a very active social presence. More so, the chapter was recognized by the national fraternity for operational excellence.

As Eminent Commander, I am incredibly proud of the work the Epsilon Sigma Chapter and alumni have put in this semester. We have made great strides in the organization of the House Corporation, and we hope to see it off the ground by the start of next semester. There has been a lot of success in this chapter over the recent years and we have been fortunate to have a dedicated brotherhood and alumni base. I am incredibly thankful for the effort that has gone into this chapter and am very excited for the success to come.

I hope everyone has wonderful winter break!

Fraternally,
Demitri Jerow
Epsilon Sigma #1133



Sigma Nu Fraternity
Rhodes College

2000 North Parkway
Memphis, Tennessee 38112

Address Service Requested

PRESORTED
FIRST-CLASS MAIL
U.S. POSTAGE
PAID
MEMPHIS, TN
Permit No. 78