

UPCOMING EVENTS

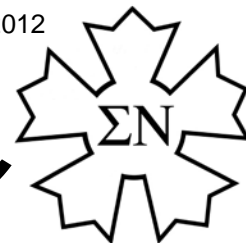
Alumni Happy Hour
Thursday, July 12
Alumni Chapter Meeting
Monday July 16
Sigma Nu Memphis Redbirds
Saturday, July 28
Homecoming
Saturday, October 20

The

EPSILON SIGMA

News

Spring 2012



Sigma Nu Fraternity • Rhodes College • <http://epsilonsigmasigmanu.com/>

Important Note: If you have not already done so, please use the Alumni Update form on our website to [update your information](#) so you can continue to receive messages and updates from the Chapter.

Greetings from the Active Chapter

Brothers,

The Active Chapter is excited to inform you of the continued progress we have seen this semester. Recently, the Chapter ended the semester with 59 active brothers after taking in a spring pledge class of 7 and has continued to maintain a positive role on and off campus. Epsilon Sigma been named Fraternity of the Year for the second year in a row and has consistently maintained the highest GPA of all fraternities. Several members have held leadership positions within Rhodes Student Government and Student Life serving as PA Leaders. Service has also stood as a high priority as the Chapter has participated in programs such as the Chapter's spring service plunge with the Center for Transforming Communities and the fraternity-wide Millington City-Wide Litter Pick-Up. The Chapter is excited to share the news of our continued growth and accomplishments with our alumni and hope to see you at one of our upcoming events.

Sincerely,

Jared Gab, ΕΣ 1106
Alumni Relations Chairman

Recruitment

The Active Chapter is now almost 60 members in size. Please welcome our newly initiated brothers!

Spring 2012 Initiates

Harrison Adams: When people tell me they want something done, I try to do it to the best of my ability and I really appreciate the sense of brotherhood that Sigma Nu endorses.

Dakota Januchowski: I am from Fort Campbell, KY, and I hope to major in biology. The brotherhood in Sigma Nu is exactly what I'd been searching for since the beginning of my freshman year.

Drew Kerby: I am a pre-med neuroscience major and run on the varsity cross country/track teams. I am glad to join Sigma Nu because of the camaraderie that exists in our Chapter.

Bailey Kimmitt: I'm from Mobile, Alabama. I spend my time playing on the golf team and I'm involved in RUF. Sigma Nu allows me to be involved and meet people throughout campus.

Anthony Perez: I am a member of GSA and the Rhodes Quidditch Team. Even though I just activated, being a Sigma Nu has given me some of the best experiences here at Rhodes.

Anuj Sharma: I am currently an incoming junior chemistry major. After serving as my pledge class president I believe that Sigma Nu has a lot to offer me to help me grow as a leader and as a brother.

Jess Wilder: I'm an RSG Senator, peer tutor, and a founding member of TISL at Rhodes and I'm glad to be a Sigma Nu because of the tradition of leadership within the Chapter.

Semester Highlights

Poker Night with Rushees



LEAD Session with President Trout



Spring Service Plunge



KA Chili Cook-Off Champions



Sigma Nuau Party



EXCLUSIVE
On the Web!

To see all the photos in our collection,
visit <http://epsilonsigmasigmanu.com/>

Brotherhood

As we continue to grow in size, we strive to maintain a close and amiable brotherhood, learn from our diversity, and continue to trust and support our brothers. These challenges, however, are good challenges to have. As several of the new initiates noted in the Recruitment section on page 1, true brotherhood has been easy to maintain within Sigma Nu because of the close-knit nature of the Rhodes community, and, as a result, Sigma Nu has been a natural choice during recruitment. Additionally, many of the brothers occasionally remark how they did not see themselves as “Greek Men” by any means before coming to Rhodes and finding a home in Sigma Nu. Consequently, our relative diversity has become a rallying cry, uniting the brothers of Sigma Nu in a close and intimate brotherhood.

This semester was filled with late nights bowling, watching movies, and playing laser tag. Additionally, we are putting a greater emphasis on brotherhood events on campus. By rearranging some of the furniture in the house and with wireless internet being installed in the near future, we hope to make the house a prime location for studying, relaxing, and supporting each other as brothers, classmates, and friends. Also, we are continuing to build on an increased interest in tailgating, especially with our alumni.

Over the summer, a large number of brothers will be staying in the Memphis area to do internships and preserve the camaraderie of Sigma Nu. I do not doubt that the coming years will only bring great memories with the 58 other men I currently call brothers in Sigma Nu, and look forward to seeing you at one of our events and connecting with you in the near future.

Andrew Tait, ΕΣ 1150
Recorder, Public Relations Director

Alumni Mailing List

The Alumni Chapter is excited to announce the creation of an Epsilon Sigma alumni mailing list. Watch for your invitation to join the mailing list!

What is a mailing list?

A mailing list is a group of email addresses that receive an email when someone sends a message to the list address.

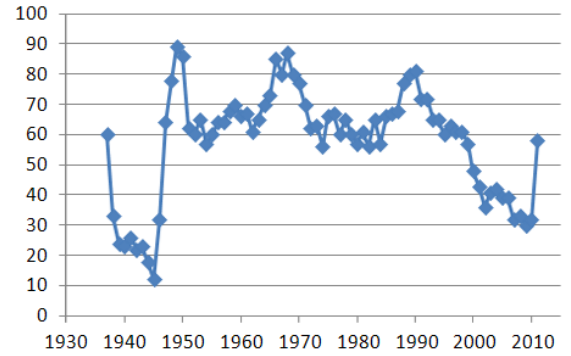
What are the benefits of a mailing list vs. mass emails?

- independently manage user subscription preferences, including daily and digest, or unsubscribe
- freely communicate with other list members
- protect member privacy
- moderate messages and members
- private archive of mailing list submissions

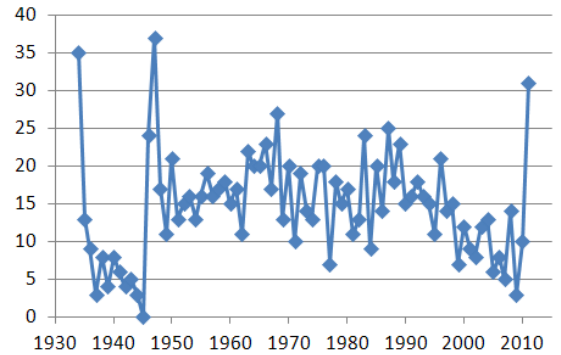
How do I post to the alumni mailing list?

To send a message to this list, email your message to:
alumni@list.epsilonstigma.org

Epsilon Sigma Chapter Size



Recruitment



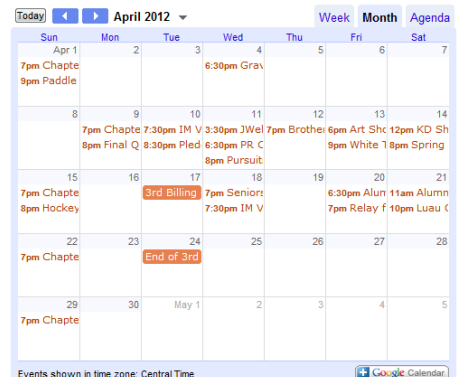
Networking Opportunities

The Alumni Chapter is gathering information about networking opportunities, internships, and job offerings. If you would like to network with fellow alumni and/or know about internships or job offerings for recent grads and young alumni, please send an email to our new alumni mailing list alumni@list.epsilonstigma.org.

You can also connect with the Chapter on [LinkedIn](#), [Facebook](#), [Twitter](#), and [YouTube](#)!

Public Event Calendar

The Epsilon Sigma Chapter is excited to announce the creation of a public calendar. All public Active Chapter and Alumni Chapter events will be posted to the calendar and accessible in real-time via <http://epsilonstigma.org/events/>



Message from Our Chapter Advisor

Brothers,

Two often-used quotes come to mind as I try to summarize what the Epsilon Sigma Chapter has done this year – “Success breeds success” and “There is strength in numbers.” Our Epsilon Sigma Chapter has proven these every day with what has been accomplished this year.

For starters, twenty-one new brothers have been initiated this year which brings the Chapter to 59, its highest level in recent history! More than just an impressive number, these young men collectively use their talents and put forth the required effort to accomplish many great things on and off campus. See the Message from Our Commander by Rikeen Patel below for the recent awards and recognitions.

The past and present officers and committee chairmen for the Epsilon Sigma Chapter have taken their responsibilities seriously and fostered a genuine spirit of brotherhood. I am certain they will always look back at this time and be glad they made the decision to accept the bid and pledge Sigma Nu... and remember they are a Sigma Nu for life!

One way we can ensure this will continue is to become involved with an alumni group and participate at whatever level you can. With the release of the Epsilon Sigma Chapter public calendar, you can subscribe to the calendar for automatic updates or check the website. Please know you are welcome to attend any meeting or event. I am confident you will be welcomed and be glad you did. There are few investments that yield such returns and rewards.

With Love, Honor, and Truth

Rob McCleary, III 38
Chapter Advisor

Chapter House Improvements

Throughout this past semester the Sigma Nu House has undergone some much needed updates. The faucet on the outside of the house was repaired and is now completely operational. Recently, a new sound system has been acquired, a major upgrade from the previous system. And finally the Eminent Commander received a new desk thanks to the hard work of our recent pledge class. Although there have been many improvements to the house, there are still many projects that we would like to accomplish. Some of the upcoming projects include: making the sound system door more secure, replacing the door to the utility closet, and finding a place for the old pool table. Long term projects to the house include: getting a new air conditioning system, getting an estimate and fixing the roof to the house, and fixing the broken locks on the house. Hopefully all of these much needed improvements will be completed in a timely and effective manner.

Joey Miller, EΣ 1113
House Chair

Phong Lam, EΣ 1122
Treasurer

Philanthropy

The Epsilon Sigma Chapter has been named “Most Philanthropic Fraternity” at Rhodes by the Sou’Wester—two years in a row!

Habitat for Humanity

The entire Chapter participated in a service plunge at a variety of locations to rejuvenate the Memphis community.



Rhodes Rebuilds

Brothers travelled to the Dominican Republic, New Orleans and Joplin, MO to give aid from disasters.

GlobeMed's 5k Spring Race

Brothers helped raise several thousand dollars for a Nicaraguan community.



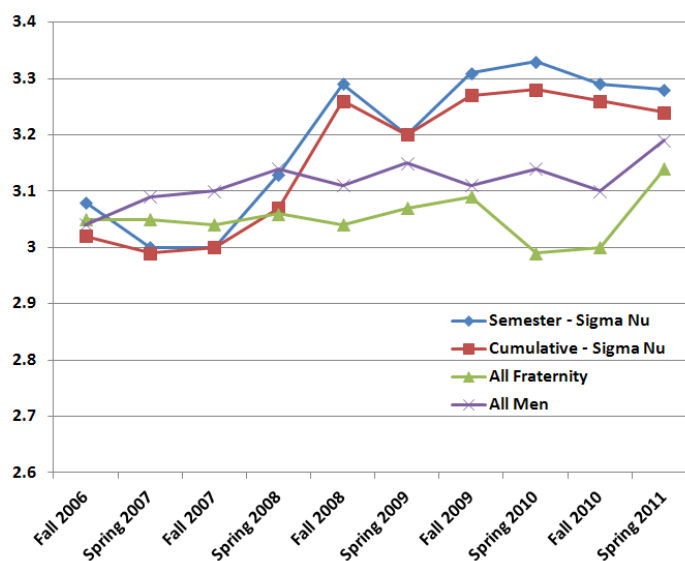
Social Events

This past semester our Chapter hosted several social events on campus, including several open parties to all of campus and closed events with each sorority. In addition to all of these great events we have begun combining social and philanthropic events, by inviting different sororities and other student organizations to join us for community service events. In the fall semester, Robbie Lenzini will be taking over position of Social Chair and will continue and further the success we have had this past semester.

Demitri Jerow, EΣ 1150
Social Chair

Academics

Sigma Nu has achieved the highest cumulative GPA of all fraternities at Rhodes—five semesters in a row!



Message from the Commander

As the current Commander of the Epsilon Sigma Chapter of Sigma Nu Fraternity, I have been keeping a close eye on Chapter operations. Like many in the Chapter, I never intended to become a Greek Man based on the ideals and operations of many Greek chapters that I had witnessed firsthand. I pledged Sigma Nu a year ago, in the second semester of my sophomore year. Having been on both sides, as an outsider and as a brother, I have gathered much about how this Chapter has evolved. When I entered Rhodes College I joined many clubs and instantly became involved. Greek Life, and in particular Sigma Nu, was not viewed favorably. Over the next year the campus as a whole was shocked as the Epsilon Sigma Chapter turned its image around and becoming actively involved in campus life. Sigma Nu has consistently been on the podium receiving awards of Best Fraternity, Fraternity Man of the Year, Highest GPA, Most Philanthropic, and more. Sigma Nu's LEAD program is designed to select, train, and implement leaders. This is what drew me to Epsilon Sigma. I was sound socially, and always have been, but the idea of a network of brothers that are so fervently committed to fostering excellence between them was too much to resist. We are not a fraternity of followers. We are the leaders of this campus, by design, not by happenstance.

One aspect of campus involvement and brother development is our leadership plan. The plan has become more refined over the past year. We start early. When recruiting students we make sure to separate social benefit from academic benefit. Sigma Nu is not tolerating of those who bring their brothers down, in GPA, image, or complacency. Low GPA's are remedied with study halls and probations, while good ones are rewarded with keys and dinners. This has led to our GPA improving and subsequently our five consecutive highest Greek GPA awards.

We are also a fraternity of achievers, and achievement is the means by which we earn respect. When this becomes clear and we recruit those who are committed to excellence, we renew the cycle. We encourage all candidates to run for positions around campus. We have brothers in each of the major branches of campus operations; Honor Council, Social Regulations Council, Student Government, Rhodes Activities Board, and Class Council. These elections are a big part of how we establish our footing as a Chapter. We take aim at this opportune time as an investment in our candidates' and brothers' futures. We do not take this goal lightly, either. Sigma Nu hits hard when it comes to campaigning. The level of brother support is overwhelming and the favorable image generated by friendships and trust help us to get these leaders elected. Once elected, we have the older, more experienced brothers help the younger ones become actively involved in their respective organizations. For example, when me and several of my Student Government brothers were elected, the Student Government President and Vice President, both Sigma Nu's, took us under their wings and showed us how to best serve in the organization. With this information, we were able to help further the organization and through our effort, 3 of the 6 committee chairs of the organization, a campus wide body, are Sigma Nu's. This plan, while simple in concept, is not one that has allowed Sigma Nu to make a positive impact on campus. This cycle has been ingrained in brothers' minds so that when their time comes, they will also be mentors.

Another aspect of Chapter image that we have actively improved is our relation with staff and faculty. Because Greek Life's general apathy towards campus involvement decays the relationship between Campus Safety and other service and academic organizations, Sigma Nu takes a proactive role in communicating with each of these groups. Greek Life has been at odds with Campus Safety in particular, and we do our best to meet with them every week to discuss ways to avoid liabilities. We also make an effort to communicate with the Rhodes administration and participate actively in campus events and causes. If there is an event on Rhodes' campus that is service oriented, student driven, or helps improve the community, you can be sure to find several Sigma Nu's, more often than not proudly wearing our letters.

The final and most crucial change we have made towards improving the Chapter and enhancing Chapter operations is our time spent in training new officers. In the past we did not invest as much with officer transitions following elections. Now, each of our officers is tasked with training at least one underclassman to perform their job. When I attend meetings with administration or the IFC, I always take at least one freshman with me. It is important to us that they are exposed to the leadership of this Chapter early on. Transparency is reaching 100%, as there are no mysteries behind Executive Council operations. We make sure to have those that plan to run for positions find their respective current officers and consult them on their duties and time commitments. By the time elections arrive, interested brothers have all of the information they need to determine which role is the best fit for them. The additional training and guidance we now foster within the Chapter is crucial to sustaining our Chapter's forward momentum. With this system in place, I am confident we will continue to make great strides in the pursuit of excellence.

While I am biased, as the Commander of the Chapter, I must assert that Epsilon Sigma has not only achieved the goal of fostering committed leaders, we continue to perfect it. This system that we have created is self-sustaining. We have a momentum that no other Greek chapter on campus can match. We are turning heads and not looking back. We have analyzed the best practices library, consulted national leaders (Grand Chaplain Gaston among them), worked hard with our Chapter Advisor, and made every effort to work towards our goal of excellence. While I am excited to launch into the coming semester and help Sigma Nu excel, I am more excited to come back to this Chapter years from now and see where this momentum carries us.

While I admit that progress can always be made and that we will work tirelessly to improve all aspects of Chapter operations, I must say that now is the time to get involved. This is the most opportune time to show support for our Chapter's achievements, and recognize the Active Chapter's success. I end my report with a statement: Epsilon Sigma is always committed to improvement. If you, one of our alumni, or anyone else wishes to become involved in our Chapter, you have only to reach out to us and we will welcome the involvement with open arms.

Faternally,

Rikeen Patel, ΕΣ 1137
Eminent Commander

Sigma Nu Revisited

The Active and Alumni Chapters are working together to create a "Sigma Nu Revisited" video to celebrate the Chapter's 75 years of success. Now you will be able to remember your college days with friends and family anytime for many years to come!

The video will feature pictures, music, and alumni interviews that span the past 75 years.

[Watch the Sigma Nu Revisited Teaser on YouTube.](#)

If you have any pictures for the Sigma Nu Revisited video, please [contact us!](#)

We have received submissions from:

Al Wunderlich '39	Charles Cobb, Sr. '44
Art Rollins '81	Bill Byrd '78
Buddy Whiteaker '58	Bill Short '71
Mark Houston '79	Rush Waller '83
Ben Waller '11	Andrew Bell '11
Dot Neale '77	Becky Hatcher '77

Anyone who submits material for the Sigma Nu Revisited video will receive a FREE copy of the video!

COMING SOON!



**SUBMIT PHOTOS
FOR INCLUSION IN THE
VIDEO AND RECIEVE
A FREE COPY!**

- **DIGITALLY REMASTERED VIDEO OF SIGMA NU (1935 - 2010)**
- **DIGITAL STEREO SOUND**
- **TRIBUTE TO GOODBAR MORGAN**
- **WILL INCLUDE 75TH ANNIVERSARY FOOTAGE**

Address Service Requested

Memphis, Tennessee 38112
2000 North Parkway

Sigma Nu Fraternity
Rhodes College



PRESORTED
FIRST-CLASS MAIL
U.S. POSTAGE
PAID
MEMPHIS, TN
Permit No. 78